

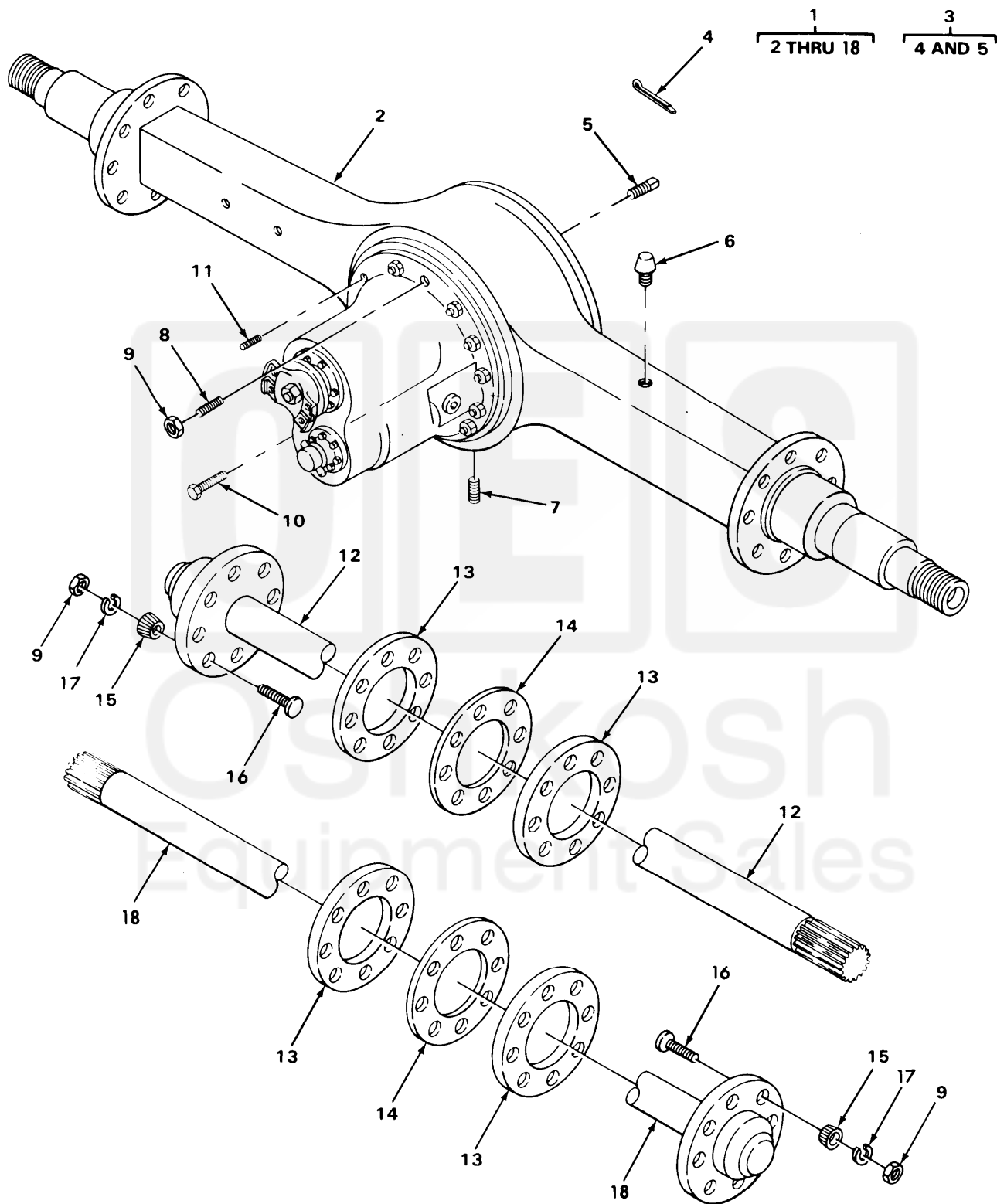
TA215466

FIGURE 92. FORWARD REAR AXLE AND REAR REAR AXLE ASSEMBLIES (MODEL M915).

SECTION (1) ITEM NO	II (2) SMR CODE	(3) FSCM	TM9-2320-273-24P (4) PART NUMBER	(5) DESCRIPTION AND USABLE ON CODE (UOC)	(6) QTY
GROUP:11 REAR AXLE GROUP:1100 REAR AXLE ASSEMBLY					
FIGURE 92. FORWARD REAR AXLE AND REAR REAR AXLE ASSEMBLIES (MODEL M915).					
1	PAFHD	78500	QHP-QX1	AXLE ASSEMBLY,AUTOM FORWARD REAR, COMPONENTS SAME AS P/N QAR-QX65 EXCEPT WHERE INDIVIDUAL COMPONENTS ARE ANNOTATED UOC:U21	1
1	PAFHD	78500	QHP-QX49	AXLE ASSEMBLY,AUTOM FORWARD (WET), COMPONENTS SAME AS P/N QAR-QX65 EXCEPT WHERE INDIVIDUAL COMPONENTS ARE ANNOTATED UOC:U21	1
1	PAFHH	78500	QAR-QX65	AXLE ASSEMBLY,AUTOM (OIL) UOC:U21	1
2	XAFZZ	78500	C1-3121-B-28-S	.HOUSING ASSEMBLY UOC:U21	1
2	XAFZZ	78500	C 1-3121-C-29S	.HOUSING ASSEMBLY UOC:U21	1
3	PAOOO	78500	A-1199-S-1709	.PLUG,ASSEMBLY UOC:U21	1
4	PBOZZ	96906	MS4665-283	. .PIN,COTTER UOC:U21	1
5	PAOZZ	78500	1850V48	. .PLUG,PIPE UOC:U21	1
6	PAOZZ	78500	A 1199P1394	.BREATHER UOC:U21	1
7	PAOZZ	78500	1250Z182	.PLUG,PIPE,MAGNETIC UOC:U21	1
8	PBFZZ	78500	S-21014-1	.SCREW,CAP,HEXAGON UOC:U21	10
9	PAFZZ	78500	1229U1503	.WASHER,FLAT UOC:U21	14
10	PBFZZ	78500	SN1021-1	.STUD,PLAIN UOC:U21	4
11	PAFZZ	78500	N 110-1	.NUT,PLAIN,HEXAGON UOC:U21	4
12	PAOZZ	78500	3202-L-6356	.SHAFT,AXLE,AUTOMOTI FORWARD REAR, RH,USE WITH P/N QHP-QX1,QHP-QX49 UOC:U21	1
12	PAOZZ	78500	3202-N-6358	.SHAFT,AXLE,AUTOMOTI REAR-REAR,RH, USE WITH P/N QAR-QX1,QAR-QX65 UOC:U21	1
13	PAOZZ	78500	A1205U619	.SEAL OIL OUTER UOC:U21	2
13	PAOZZ	78500	A1205N612	.SEAL ASSY, OUTER UOC:U21	2
14	PAOZZ	79780	2208X440	.GASKET PART OF KIT P/N KIT-936 PART	4

SECTION II

TM9-2320-273-24P



TA215468

FIGURE 93, FORWARD REAR AXLE ASSEMBLY (MODELS M916, M917, M918, M919 AND M920).

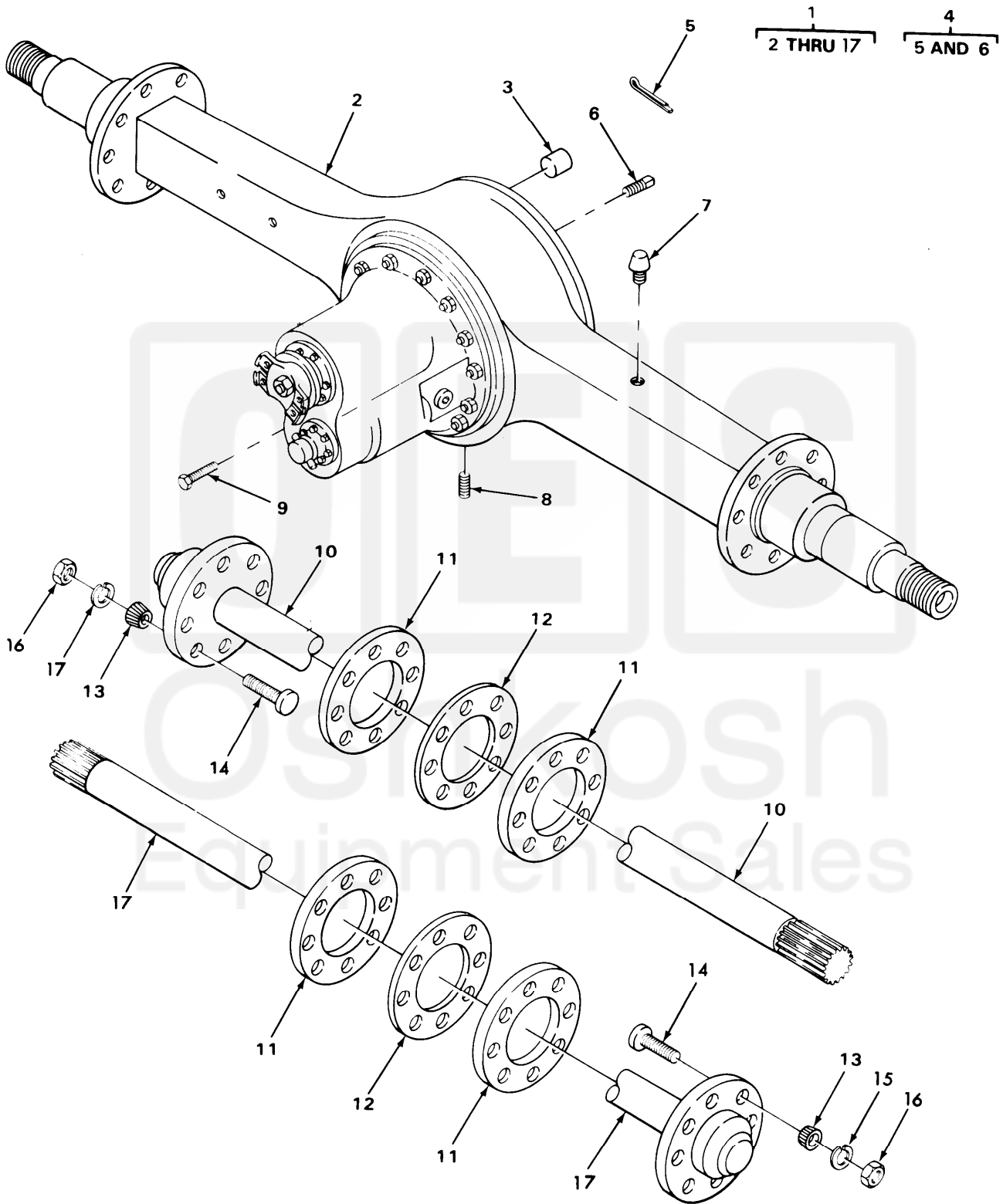
SECTION II (1)	ITEM (2)	(3)	TM9-2320-273-24P (4)	(5)	(6)
NO	SMR CODE	FSCM	PART NUMBER	DESCRIPTION AND USABLE ON CODE (UOC)	QTY
GROUP:1100 REAR AXLE ASSEMBLY					
FIGURE 93. FORWARD REAR AXLE ASSEMBLY (MODELS M916,M917,M918,M919 AND M920).					
1	PAFHD	78500	UHD-PX41	AXLE ASSEMBLY,AUTOM UOC:U22,U23,U24,U25,U26	1
2	XAFZZ	78500	C-3121-P-380	.AXLE ASSY HOUSING UOC:U22,U23,U24,U25,U26	1
3	PAOOO	78500	A-1199-S-1709	.PLUG,ASSEMBLY UOC:U22,U23,U24,U25,U26	1
4	PAOZZ	96906	MS24665-283	. .PIN,COTTER UOC:U22,U23,U24,U25,U26	1
5	PAOZZ	78500	1850V48	. .PLUG,PIPE UOC:U22,U23,U24,U25,U26	1
6	PAOZZ	78500	A1199P1394	.BREATHER UOC:U22,U23,U24,U25,U26	1
7	PAOZZ	78500	1250Z182	.PLUG,PIPE,MAGNETIC UOC:U22,U23,U24,U25,U26	1
8	PBFZZ	78500	4X1051	.STUD,PLAIN UOC:U22,U23,U24,U25,U26	4
9	PAFZZ	78500	N110-1	.NUT,PLAIN,HEXAGON UOC:U22,U23,U24,U25,U26	20
10	PBFZZ	78500	S-21014-1	.SCREW,CAP,HEXAGON UOC:U22,U23,U24,U25,U26	10
11	PBFZZ	78500	SN-1018-1	.STUD,PLAIN UOC:U22,U23,U24,U25,U26	2
12	PAOZZ	78500	3202-Z-7384	.SHAFT,AXLE,RH UOC:U22,U23,U24,U25,U26	1
13	PAOZZ	78500	2208W413	.GASKET UOC:U22,U23,U24,U25,U26	4
14	PAOZZ	78500	A1205U619	.SEAL OIL OUTER UOC:U22,U23,U24,U25,U26	2
15	PAOZZ	78500	1246D290	.BUSHING,TAPERED UOC:U22,U23,U24,U25,U26	16
16	PAOZZ	78500	4X1027	.STUD UOC:U22,U23,U24,U25,U26	16
17	PAOZZ	96906	MS35335-39	.WASHER,LOCK UOC:U22,U23,U24,U25,U26	16
18	PAOZZ	78500	3202-C-7387	.SHAFT,AXLE,LH UOC:U22,U23,U24,U25,U26	1

END OF FIGURE



SECTION II

TM9-2320-273-24P



TA215469

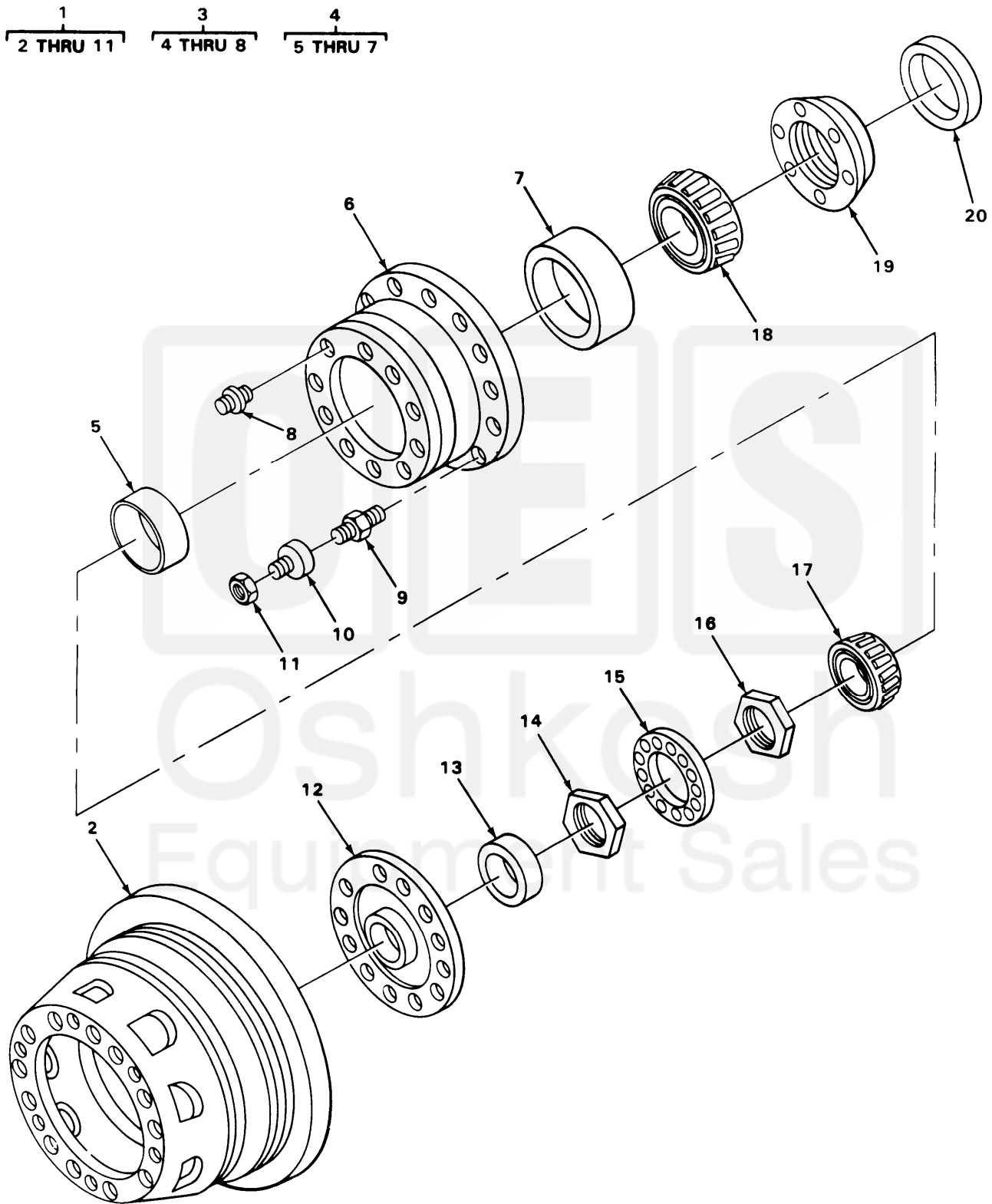
FIGURE 94. REAR REAR AXLE ASSEMBLY (MODELS M916, M917, M918, M919 AND M920).

SECTION II (1)	II (2)	(3)	TM9-2320-273-24P (4)	(5)	(6)
ITEM NO	SMR CODE	FSCM	PART NUMBER	DESCRIPTION AND USABLE ON CODE (UOC)	QTY
GROUP:1100 REAR AXLE ASSEMBLY					
FIGURE 94. REAR REAR AXLE ASSEMBLY (MODELS M916, M917, M918, M919 AND M920).					
1	PAFHH	78500	UHR-PX27	AXLE ASSEMBLY, AUTOM UOC: U22, U23, U24, U25, U26	1
2	XAFZZ	78500	C-3121-N-378	. HOUSING ASSEMBLY UOC: U22, U23, U24, U25, U26	1
3	PAOZZ	81348	WW-P-471ACBBLLE	. PLUG, PIPE UOC: U22, U23, U24, U25, U26	1
4	PAOOO	78500	A-1199-S-1709	. PLUG ASSEMBLY UOC: U22, U23, U24, U25, U26	1
5	PAOZZ	96906	MS24665-283	. . PIN, COTTER UOC: U22, U23, U24, U25, U26	1
6	PAOZZ	78500	1850V48	. . PLUG, PIPE UOC: U22, U23, U24, U25, U26	1
7	PAOZZ	78500	A 1199P1394	. BREATHER UOC: U22, U23, U24, U25, U26	1
8	PAOZZ	78500	1250Z182	. PLUG, PIPE MAGNETIC UOC: U22, U23, U24, U25, U26	1
9	PBFZZ	78500	S-21014-1	. SCREW, CAP, HEXAGON UOC: U22, U23, U24, U25, U26	16
10	PAOZZ	78500	3202-C-7387	. SHAFT, AXLE, AUTOMOTI RH UOC: U22, U23, U24, U25, U26	1
11	PAOZZ	78500	2208W413	. GASKET UOC: U22, U23, U24, U25, U26	4
12	PAOZZ	78500	A1205U619	. SEAL OIL OUTER UOC: U22, U23, U24, U25, U26	2
13	PAOZZ	78500	1246D290	. BUSHING, TAPERED UOC: U22, U23, U24, U25, U26	16
14	PAOZZ	78500	4X1027	. STUD UOC: U22, U23, U24, U25, U26	16
15	PAOZZ	96906	MS35335-39	. WASHER, LOCK UOC: U22, U23, U24, U25, U26	16
16	PAOZZ	78500	N110-1	. NUT, PLAIN, HEXAGON UOC: U22, U23, U24, U25, U26	16
17	PAOZZ	78500	3202-Z-7384	. SHAFT, AXLE, AUTOMOTI UOC: U22, U23, U24, U25, U26	1
END OF FIGURE					

Oshkosh
Equipment Sales

SECTION II

TM9-2320-273-24P



TA217133

FIGURE 212, TANDEM AXLE HUB AND DRUM ASSEMBLY
(M916, M917, M919, M919, AND M920)

SECTION II (1)	SMR (2)	FSCM (3)	TM9-2320-273-24P PART NUMBER (4)	DESCRIPTION AND USABLE ON CODE (UOC) GROUP:1311 WHEEL ASSEMBLY FIGURE 212. TANDEM AXLE HUB AND DRUM ASSEMBLY (MODELS M916, M917, M918, M919 AND M920).	(5)	QTY (6)
1	PAOOO	78500	A3-333-M-1365	HUB,AND,DRUM,REAR LH UOC:U22,U23,U24,U25,U26		1
1	PAOOO	78500	A2-333-M-1365	HUB,DRUM,REAR RH UOC:U22,U23,U24,U25,U26		1
2	PAOFF	78500	A1-3219-W-2623	.BRAKE DRUM UOC:U22,U23,U24,U25,U26		1
3	PAOOO	78500	A1-333-M-1365	.HUB AND STUD UOC:U22,U23,U24,U25,U26		1
4	PAOOO	78500	A-333-M-1365	..HUB AND CUP ASSY UOC:U22,U23,U24,U25,U26		1
5	PAOZZ	55396	A0S545-10	...CUP,TAPERED ROLLER UOC:U22,U23,U24,U25,U26		1
6	XAOZZ	78500	333-M01365	...HUB UOC:U22,U23,U24,U25,U26		1
7	PAOZZ	78500	742	...CUP,TAPERED ROLLER OUTER UOC:U22,U23,U24,U25,U26		1
8	PAOZZ	78500	SC-1023	..STUD UOC:U22,U23,U24,U25,U26		10
9	PAOZZ	78500	20X-853	.STUD WHEEL,LH UOC:U22,U23,U24,U25,U26		10
9	PAOZZ	78500	20X852	.STUD,LOCKED IN RH UOC:U22,U23,U24,U25,U26		10
10	PAOZZ	96906	MS53068-1	.NUT,CAP,DUAL WHEEL LH UOC:U22,U23,U24,U25,U26		10
10	PAOZZ	78500	1199J114	.NUT CAP ASSEMBLY RH UOC:U22,U23,U24,U25,U26		10
11	PAOZZ	96906	MS51983-3	.NUT,PLAIN,SINGLE BA LH UOC:U22,U23,U24,U25,U26		10
11	PAOZZ	78500	1199N118	.NUT,CAP PUTER RH UOC:U22,U23,U24,U25,U26		10
12	PAOZZ	78500	A1205U619	SEAL,OIL OUTER UOC:U22,U23,U24,U25,U26		1
13	PAOZZ	78500	A1199H1698	SEAL,OIL WIPER UOC:U22,U23,U24,U25,U26		1
14	PAOZZ	78500	1227-R-330	NUT,PLAIN,HEXAGON UOC:U22,U23,U24,U25,U26		1
15	PAOZZ	78500	1229U1009	WASHER,KEY UOC:U22,U23,U24,U25,U26		1
16	PAOZZ	78500	1227W517	NUT,WHEEL BEARING UOC:U22,U23,U24,U25,U26		1
17	PAOZZ	78500	749	CONE AND ROLLERS,TA UOC:U22,U23,U24,U25,U26		1
18	PAOZZ	89346	31630H	CONE AND ROLLERS,TA UOC:U22,U23,U24,U25,U26		1
19	PAOZZ	02397	A1205T774	SEAL UOC:U22,U23,U24,U25,U26		1